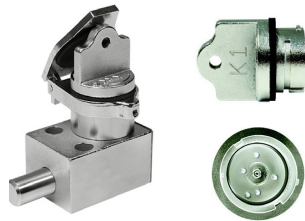




SERIES COMPARISION GUIDE



SD SERIES - The SD Series trapped key safety interlocks feature the traditional keyed brass interlock design. It is comprised of a brass interlock housing and a 303 stainless steel lock bolt. The keys are a 7-pin nickel-silver key and brass tumbler lock cylinder. The SD Series is best suited for indoor applications and moderate industrial environments and temperatures.



HD SERIES - The HD Series is made entirely of electropolished 316 stainless steel and offers high performance standards in high temperature and/or corrosive environments. HD Series trapped key safety interlocks are the ideal choice for applications that require continuous operation in harsh industrial environments.

	SD SERIES	HD SERIES
INTERLOCK COMPONENTS		
Interlock Housing	Brass	Electropolished 316 SS
Lock Bolt	303 SS	Electropolished 316 SS
Key	Nickle-Silver	Electropolished 316 SS
Cylinder Housing	Brass	Electropolished 316 SS
Inner Turn Shaft	Brass	Electropolished 316 SS
Flip Open Dust Cover	316 SS	Electropolished 316 SS
TYPICAL APPLICATIONS		
Electrostatic Precipitator	✓	✓
Switchgear	✓	✓
Ports - Shore Power		✓
Perimeter Guarding	✓	✓
Uninterruptable Power	✓	
Lockout Tagout	✓	
TEMPERATURE RATINGS	-65F to +250F	-65 to +700F