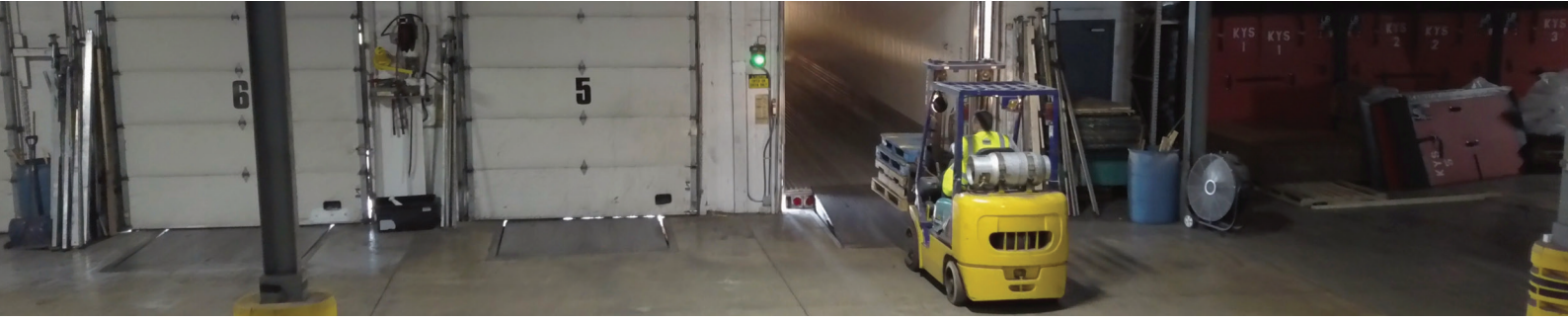


APPLICATION GUIDE

LOADING DOCKS WITH POWER DOORS - SAPD KIT



RISK

Loading and unloading of trailers requires a high level of communication to ensure the driver of a vehicle does not pull away while the forklift operator is loading/unloading the trailer which leads to the injury of thousands of forklift operators every year. Therefore, end-users require a simple, reliable and robust safety solution.

OPERATION

1. Apply the Salvo gladhand onto the trailer's emergency brake coupling. The gladhand's trapped key can only be released once this condition is met. This will ensure that the brakes are locked and the air pressure cannot be re-applied.
2. Insert the key into the Salvo control panel. A signal is sent inside, allowing the dock door to be opened. The dock door can now be opened. During loading / unloading, the key will be trapped in the Salvo control panel. The key can only be removed once loading / unloading is complete and the dock door is locked closed.
3. Once loading / unloading is complete and the dock door is closed, a signal is sent back to the control panel allowing you to remove the key. The key can then be taken back to the truck, inserted into the Salvo gladhand, allowing the air brakes to be reconnected and the truck to drive away safely.



BENEFITS

Salvo Loading Dock Safety System is a patented, proven solution that allows operations to maximize loading dock safety and productivity preventing unscheduled drive-aways, by interlocking the vehicle to the loading dock door for safe loading or unloading. The solution is currently in use at 12,000+ docks worldwide and is suitable for all loading doors & vehicles.

Note: The Salvo SAPD Kit is comprised of the products displayed.

PRODUCTS



Salvo Gladhand
(SGL)



Salvo Control Panel
(SCP)



Salvo Beacon



Salvo Proximity
Sensor
(Salvo limit Switch available
for sectional doors)



Salvo Traffic Light



Salvo Sign Kit