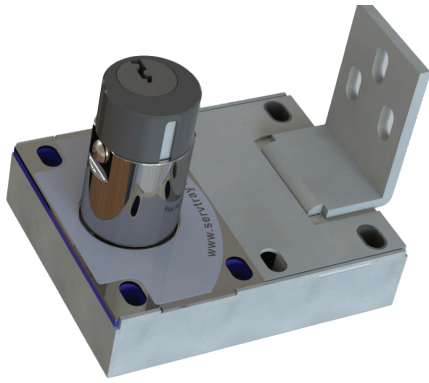


ASP/HSP Access lock



Part of the
Sentric Group



The access lock is a trapped key interlock solution designed to be used on access points (hatches, doors, gates, etc.), but also on power transformers. This lock is made of stainless steel and aluminium, which makes it ideal for use in the energy sector.

Various types of strike plates are available depending on the installation. The strike plates are reversible and can be inserted into the front or back of the lock case. This makes it the most flexible lock on the market in terms of installation. The access lock is available in two options: a key exchange function or a multiple key release function.



Trapped Key
Interlocks



ENERGY

USAGE

The access lock should be used to allow safe access to potentially hazardous areas..

The access lock must be used with:

- 1 key on access doors when the operator does not access an area, but simply opens a transformer cover or sash, (the use of personal keys is not essential)
- 2 keys on access doors when the operator is going into a hazardous area, the use of a personal key (pocket key) is essential to prevent accidental locking.



This lock is not designed to secure access to a safe or external access to a building.

INSTALLATION



A safety lock must be fitted with appropriate fixings (not supplied with the lock).

Important:

To prevent unauthorised removal, the lock must be fitted with a rivet or M5 security screws (self-tapping screws, nuts and washers) of stainless steel and secured with a threadlocker.

Tightening torque: 5Nm

Drilling of the mounting plate (when the lock is mounted from the rear): 4 holes $\varnothing 5,3$ + 1 hole $\varnothing 25$ per cylinder.

The lock must be installed by a competent and qualified person.

MAINTENANCE

No maintenance of the product is recommended. However, to improve its operation and possibly increase its life span, adding "Xenium micronised graphite powder" to the lock is accepted. Any other product is prohibited.

ASP/HSP Access lock



Part of the
Sentric Group

TECHNICAL DATA

Weight	A partir de 300 gr pour un cylindre
Material	- Cylindre - Rotor 5000 : 6064-T9 aluminium / Rotor 6000 : Grivory GVX-65h composite Stator : 6064-T9 aluminium - Serrure - AISI 304L inox
Product finishing	Anodised black (cylinder)
Type de montage	Montage en surface ou par l'arrière à l'aide de fixations appropriées
Temperature rating	-35°C / +120°C for the lock -35°C / +105°C for the switch
Salt spray tolerance	240h
Watertightness	IP4X-lock IP67-switch
IK rating	IK08
Vibrations	0.7mm @10-55HZ 1 oct/min in 3 axes
Retentive strength	250N-key 600N-strike plate
Lifespan	500000 cycles*
B10d	100000 cycles*
DC	90%
Compliance	- Directive Marquage CE 2001/95/CE - Directive Machine 2006/42/CE - Directive Basse tension 2014/35/UE (version à contact)
ROHS	Certificate available on our website, Resource Centre section
REACH	Certificate available on our website, Resource Centre section
Conflict Minerals Declaration	Certificate available on our website, Resource Centre section

*Version rotor aluminium

OPTIONS

- Flat key (RONIS type) or star key (PROFALUX type)
- Electrical switch (changeover)
- Rotor type (aluminium, composite or aluminium small series)
- Available stike plate: bend, straight or 90° bend
- Up to 3 key entries, for more key entries contact us
- It is possible to mix the types of profiles on the same lock (star / flat), contact us

APPLICATION

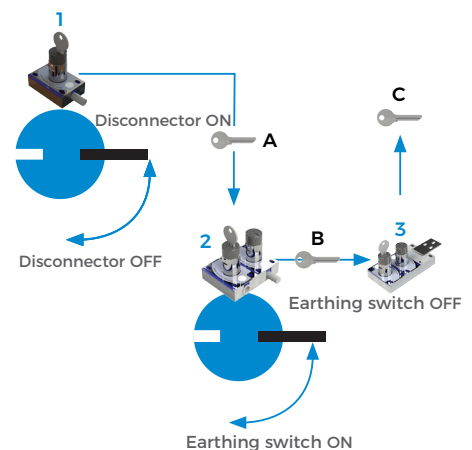
The system includes a Hercules bolt on the machine's power supply control, another Hercules bolt on the electrical circuit grounding control, and a Hercules access lock for access to the hazardous area. Under normal machine operation (motor powered), the power key A is trapped in the Hercules bolt on the machine disconnecter and the access door to the hazardous area is closed and locked.

To access the hazardous area:

1. The operator cuts the power to the machine allowing the release of the power key A
2. The power key A is then trapped in the Hercules lock of the earthing switch allowing the earthing of the electrical circuit. The operator can then release the access key B, thus locking the earthing switch in the closed position and ensuring that earthing cannot be interrupted.
3. The access key B is then trapped in the Hercules access lock releasing the personal key C and the strike plate allowing access to the area.

The personal key C is kept by the operator during operation to protect against accidental locking and starting.

4. To put the machine back into service, the operator follows the same steps in reverse order



ASP/HSP Access lock



Part of the
Sentric Group

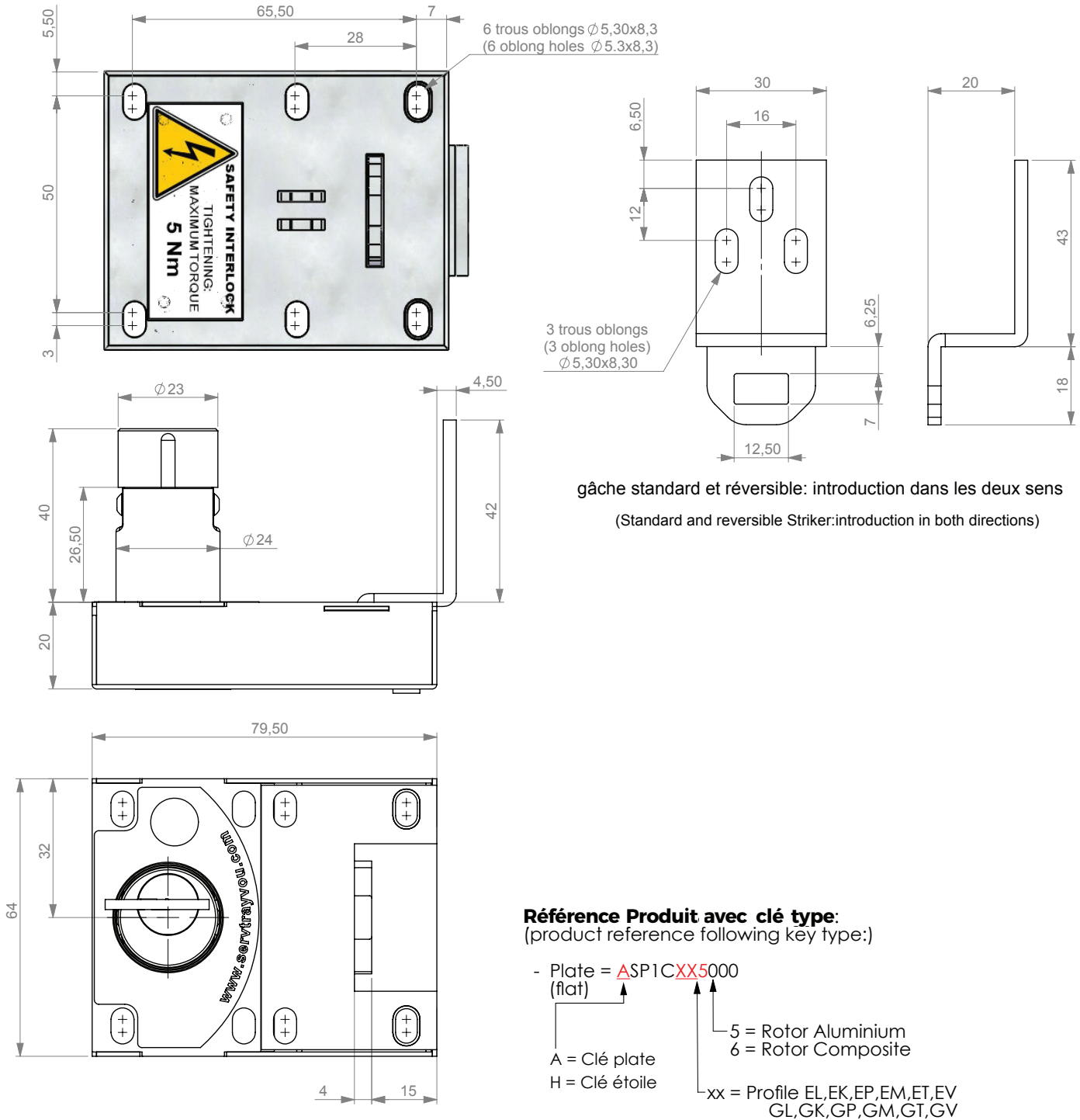
DRAWING

Dimensions: in mm

Available as a flat key (RONIS) or star key (PROFALUX)

Note: For safe mounting, use security screws.

Standard access lock



ASP/HSP Access lock



Part of the
Sentric Group

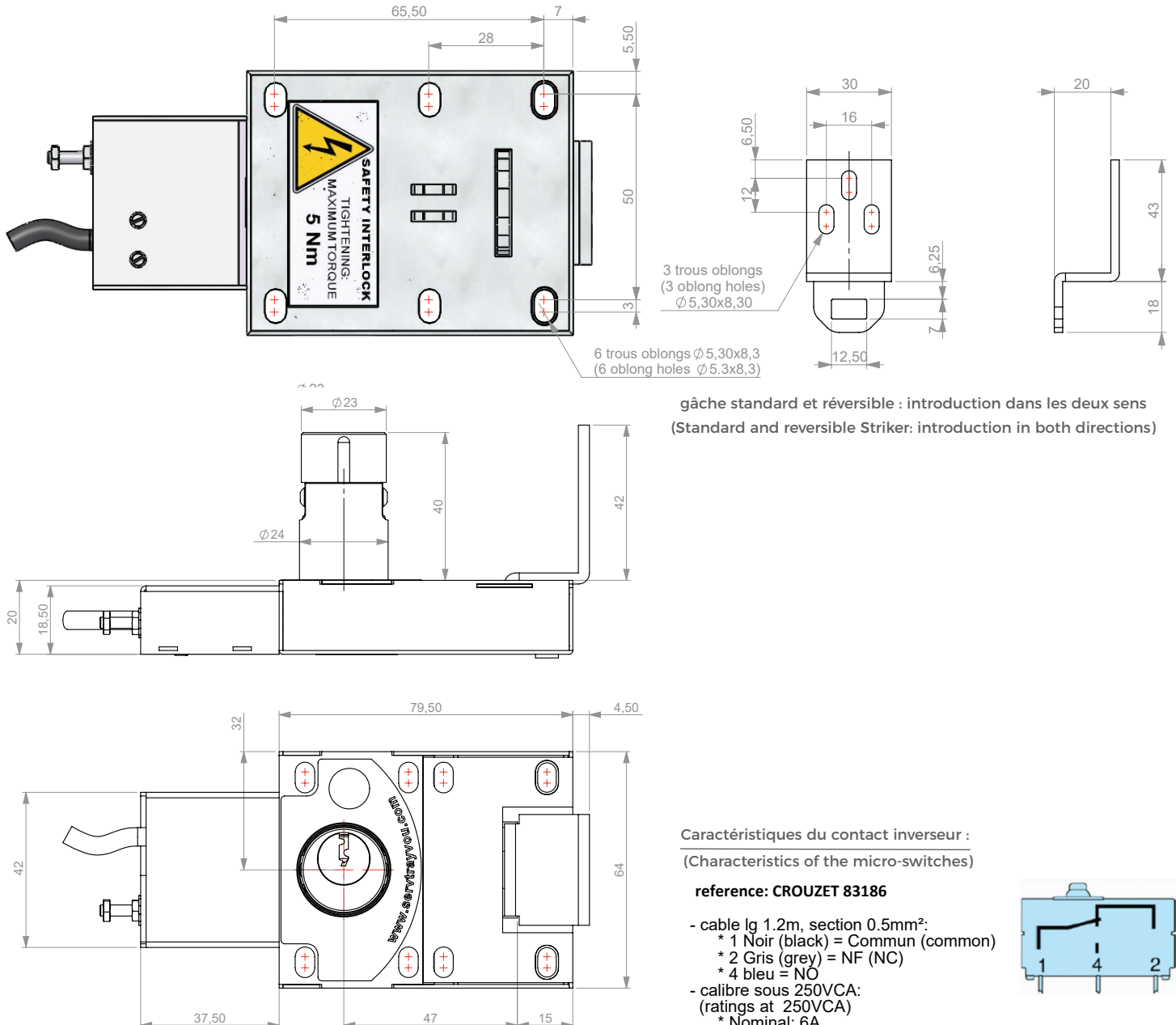
DRAWING

Dimensions: in mm

Available as a flat key (RONIS) or star key (PROFALUX)

Note: For safe mounting, use security screws.

Access lock with a switch

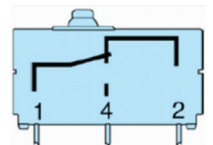


gâche standard et réversible : introduction dans les deux sens
(Standard and reversible Striker: introduction in both directions)

Caractéristiques du contact inverseur :
(Characteristics of the micro-switches)

reference: CROUZET 83186

- cable lg 1.2m, section 0.5mm²:
 - * 1 Noir (black) = Commun (common)
 - * 2 Gris (grey) = NF (NC)
 - * 4 bleu = NO
- calibre sous 250VCA:
(ratings at 250VCA)
 - * Nominal: 6A
 - * Thermique: 7.5
(Thermal)
- IP67
- Température d'utilisation : -40°C / +105°C
(operating temperature)



ASP/HSP Access lock



Part of the
Sentric Group

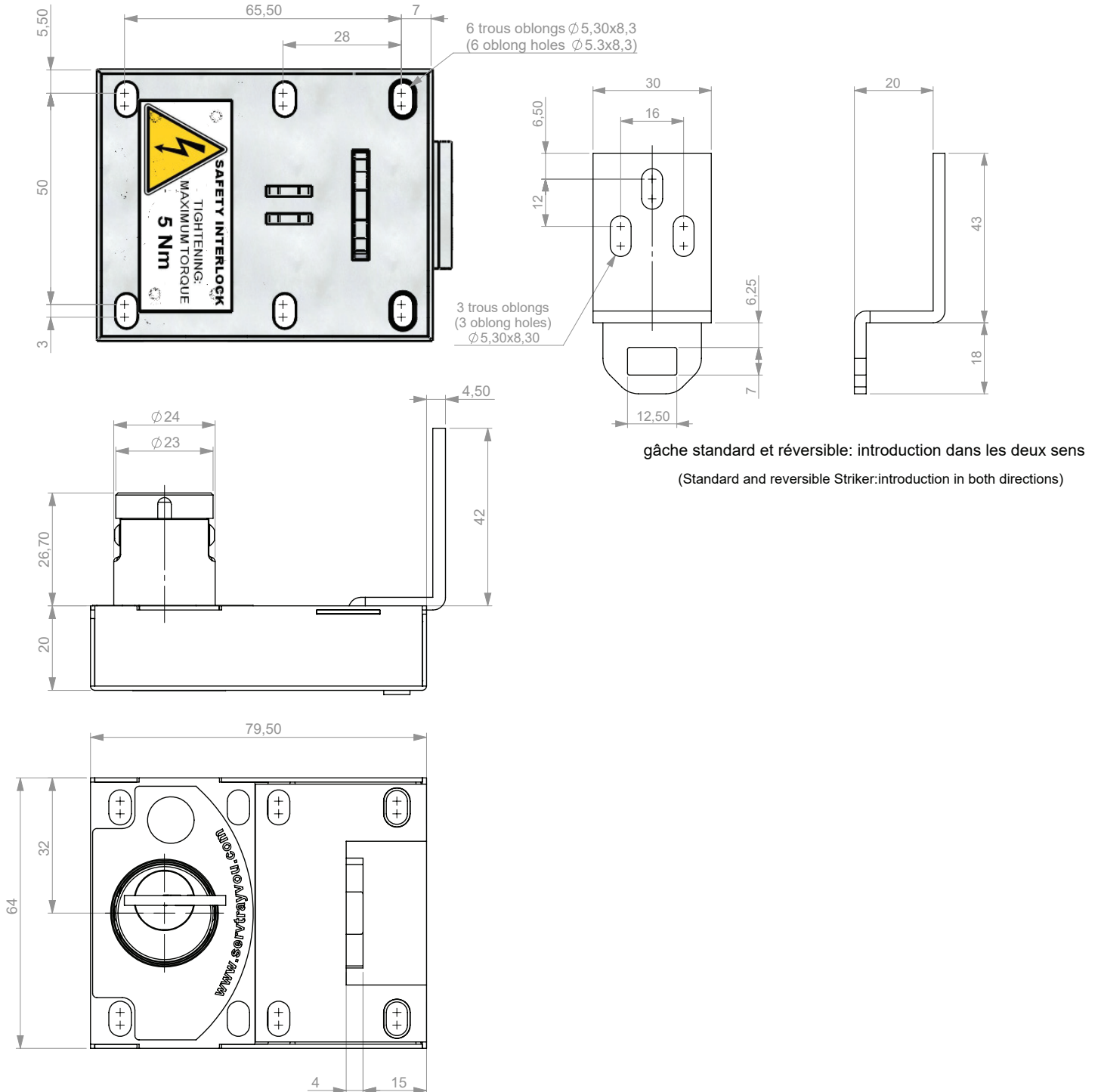
DRAWING

Dimensions: in mm

Available as a flat key (RONIS) or star key (PROFALUX)

Note: For safe mounting, use security screws.

Small series Access lock



ASP/HSP Access lock



Part of the
Sentric Group

ORDER INFORMATION

	Cylinder profile	Product type	N° of cylinder	Function	Key profile	Rotor type	Particularity
Reference							
Example	A	SP	1	C	EL	5	000

Profil cylindre	A = Flat key H = Star key
Type de produit	SP = standard access lock PC = access lock with a switch
Nombre de cylindres	From 1 to 3 cylinders
Fonction	The function determines the key position (in or out). See FUNCTION table
Profil de clé	Clé étoile = PS Clé plate à 5 pistons = EK, EL, EM, EP, ET, EV Clé plate à 6 pistons = GK, GL, GM, GP, GT, GV
Type de rotor	5 = Aluminium 6 = Composite 7 = Small series
Particularité	000 = Standard (bend strike plate) 045 = 90° bend strike plate 066 = straight strike plate 225 = 2 switches version 484 = straight strike plate + 200mm chain

N° entries	Function	Principe
1	C	
2	F	
2	H	
2	J	
3	F	
3	H	
3	J	

Legend	○	free key
	●	trapped key
	■	trapped strike plate
	□	free strike plate
	■	switch position for switch version

ASP/HSP Access lock



Part of the
Sentric Group

ACCESSORIES

- 90° bend strike plate
- Straight strike plate
- Straight strike plate + 200mm chain
- Flip cap (ref. D23556, drawing available on request)

CONTACTS

Serv Trayvou

1 ter rue du Marais, 93100 MONTREUIL, France

t: +33 (0)1 48 18 15 15 | f: +33 (0)1 48 59 68 50 | e: sales@servtrayvou.com

7 of 7



Whilst every effort has been made to ensure the accuracy of the information provided, no liability can be accepted for any errors or omissions. Serv Trayvou Interverrouillage S.A.S. reserves the right to alter specifications and introduce improvements without prior notice.

www.servtrayvou.com

U-ASP/HSP Access lock-E-01 (10-22)