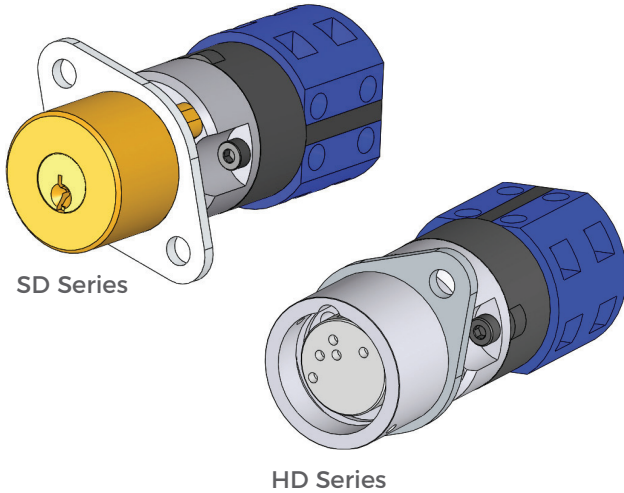


# Type PPS Isolation Interlock



Part of the  
Sentric Group



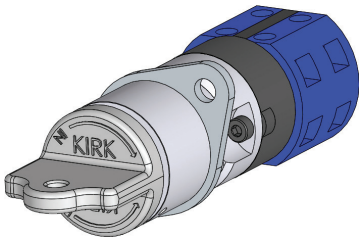
The KIRK Type PPS Power Panel Switch is a key actuated, rotary, two-position switch designed for isolation or switching of control circuitry. The Type PPS can be panel mounted or surface mounted with optional enclosure. It is available in switch ratings of 20, 25, 40, or 63A. The switch is UL listed and CSA approved.

## OPERATION

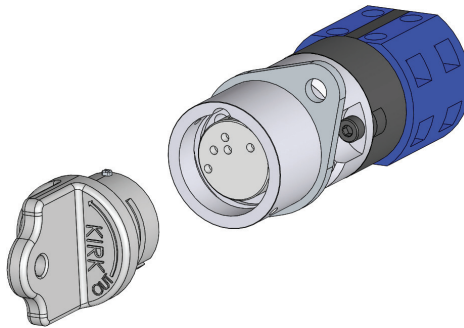
KIRK Type PPS switch interlocks are mechanically operated and suitable for the isolation or switching of control circuitry.

### Type B key operated mechanical interlock

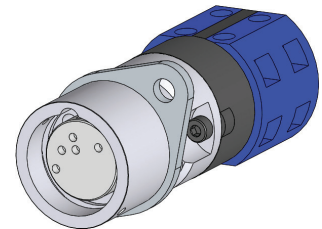
- 1** Key is trapped, control circuitry is powered on.



- 2** Turn the key, changing the state of power. Key is now released.



- 3** Power is isolated, and key can be taken to next sequential step in the interlock system.



# Type PPS Isolation Interlock



Part of the  
Sentric Group

## USAGE

KIRK Type PPS switch interlocks should be used on equipment directly engaging with control circuitry. KIRK switch interlocks ensure that once the equipment power is isolated by the switch interlock as defined by the end user's safety process and following the operations of the interlock, the control circuitry cannot be re-energized until the full sequential procedure is reversed.

No hazardous substances were used in the manufacturing of the product. The product can be disposed of in standard waste receptacles.

## INSTALLATION

The KIRK Type PPS can be panel or surface mounted (optional enclosure available for 20 amp only). Proper installation of switch interlocks is a critical element of a key interlock system. After installation of the interlocks, the complete interlock system should be tested sequentially by person(s) familiar with the entire system, the key sequence, and its intended purpose. Any problems or discrepancies must be corrected prior to energization.

SD series (brass) interlocks are supplied with a key in each cylinder. These keys are needed during installation of the interlocks.

HD series (stainless steel) interlocks are not sold with keys. Keys must be ordered separately and may be required during the installation process.



For all interlock systems to maintain system integrity, additional keys must be removed from the system and destroyed or retained by a responsible person. There should only be enough keys to operate the interlock system sequentially. Kirk Key Interlock Company will not be responsible for extra keys left in the interlock system.



All interlocks and interlock systems must be installed by a competent and qualified person who has read and understood these instructions. Please retain this document in your technical files.

## MAINTENANCE

Kirk key interlocks should be periodically lubricated with a small amount of dry powder graphite. DO NOT use oil or grease of any type as these will collect dirt and impede the proper operation of the lock cylinder.

**SD SERIES:** Apply a small amount of graphite to the key and insert the key into the lock cylinder. Work the key in an out and turn the key several times in order to distribute the graphite inside the lock cylinder.

**HD SERIES:** Apply a small amount of graphite behind the inner turn shaft. Insert and turn the key a few times in order to distribute the graphite below the lock cylinder.

KIRK offers a Graphite Lubrication kit (part# GL-1) complete with instructions for use.

Protective covers for most products are also available as accessories. Covers can be utilized to protect the lock cylinders when located outdoors or in a demanding environment.

# Type PPS Isolation Interlock



Part of the  
Sentric Group

## TECHNICAL DATA

Type PPS	SD Series	HD Series
Cylinder Housing	Brass	Stainless Steel
Plug/Inner Turn Shaft	Brass	Stainless Steel
Key Material	Nickel-Silver	Stainless Steel
Key Style	7-Pin Tumbler	Dowel Pin
Type of Mounting	Panel or surface mounted with optional enclosure for specified voltages (see ordering guide)	
Temperature Ratings	-13F to 100F	-13F to 100F
Weight	1.0 lb	1.0 lb
Certifications	Switch is UL listed and CSA approved	

\* Weight of PPS unit based on product with no key, accessories, or mounting hardware

## APPLICATION

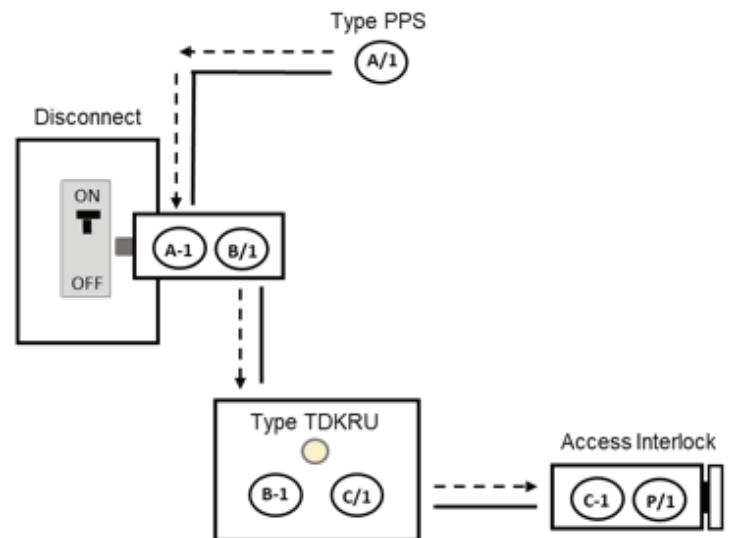
KIRK Type PPS switch interlocks are mechanically operated and suitable for the isolation or switching of control circuitry.

The interlock application example shown here is to prevent access to hazardous equipment that has residual energy and require a specified run-down time even after power has been isolated.

Initial system status: Power is on and Key A-1 is trapped in the KIRK Type PPS which is wired into the control circuitry of equipment. Key B-1 is trapped in bolt interlock on disconnect and main power to equipment is on. The equipment is not accessible until the access interlock is released.

To begin, turn key A-1 in Type PPS, dis-engaging contacts on equipment control and powering down. Key A-1 is now released and can be taken to main disconnect to fully isolate power to equipment. Switch disconnect into the OFF position. Insert and turn key A-1 in bolt interlock on disconnect, extending bolt, trapping key A-1. Key B-1 is now released. Take key B-1 to TDKRU, insert and turn, initiating timer, pre-set to specified required run-down time. Signal light will illuminate once time is complete, allowing key C-1 to be released. Insert key C-1 into access interlock and turn. This will engage the access interlock, release the door latch and personnel key P-1, and allowing safe access to equipment. Key P-1 serves as a personnel key to be kept on person performing maintenance on equipment until work is fully complete and personnel has safely exited from the area.

Note: A two key access lock is used for full body access areas. If partial body access is required, a single key access lock can be implemented.



# Type PPS Isolation Interlock

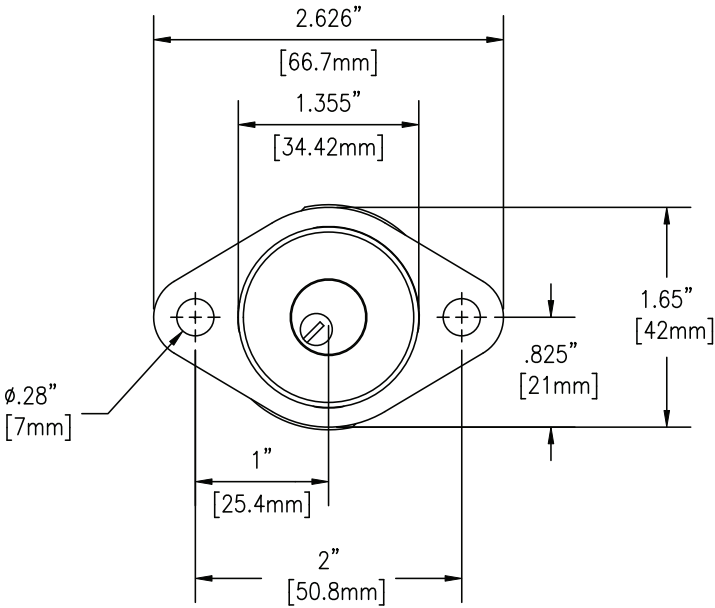
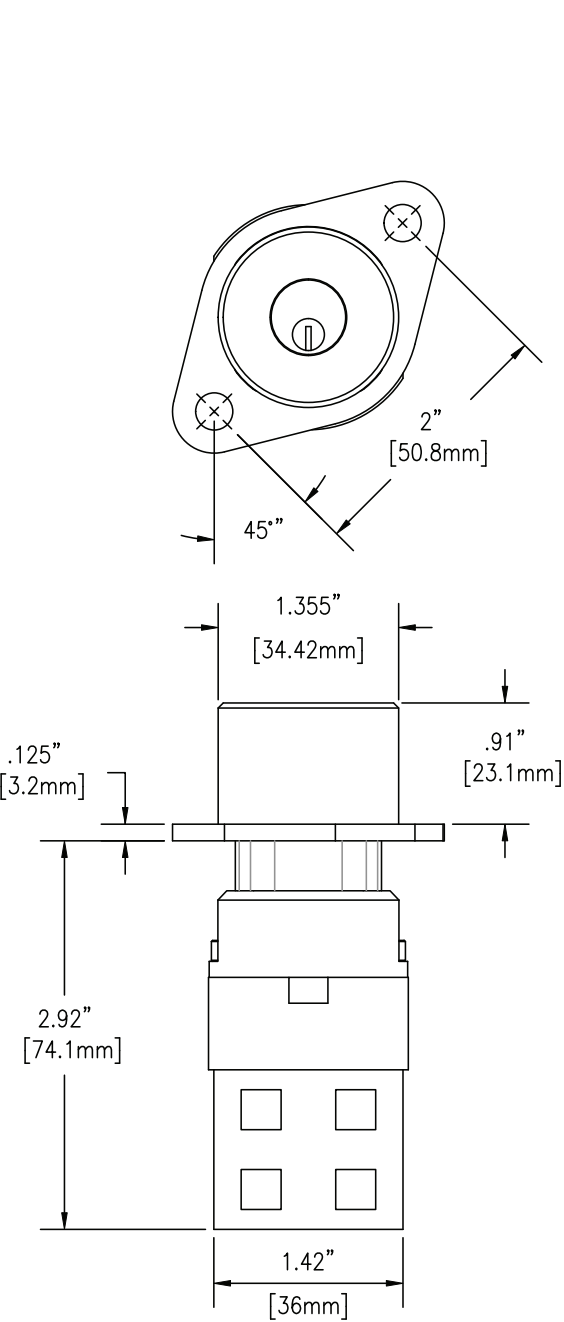


Part of the  
Sentric Group

## DRAWING

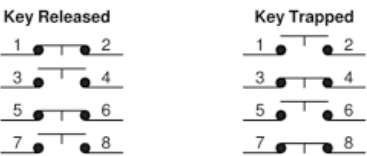
Dimensions: in inches

### SD Series Type PPS



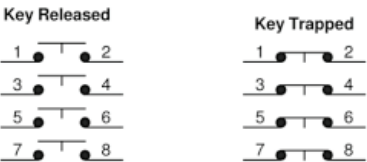
20 Amp rated switch only

2 NO / 2 NC



Available in all switch sizes.

4 NO



# Type PPS Isolation Interlock



Part of the  
Sentric Group

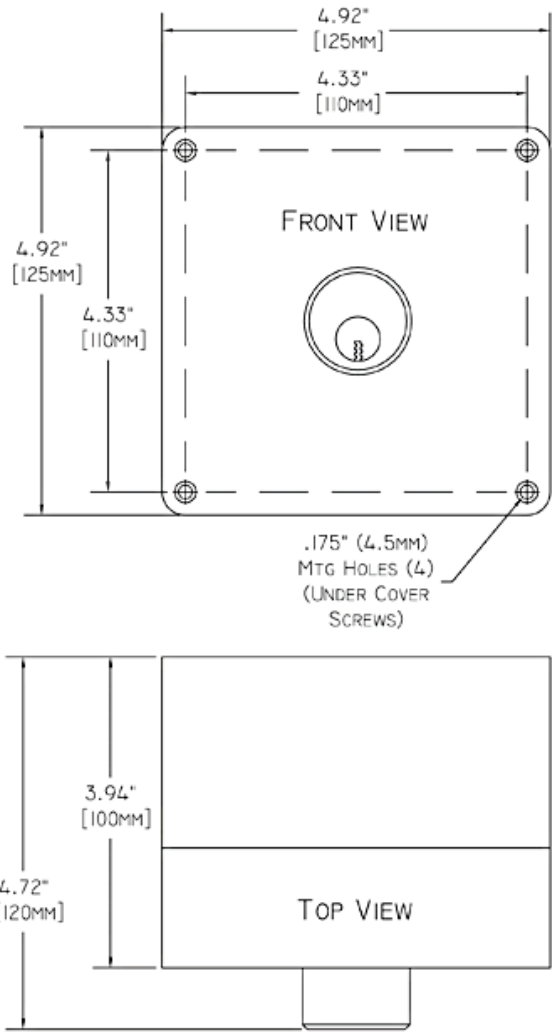
## DRAWING

Dimensions: in inches

### SD Series Type PPS



ENCLOSED PPS AVAILABLE FOR  
20 AMP ONLY



# Type PPS Isolation Interlock

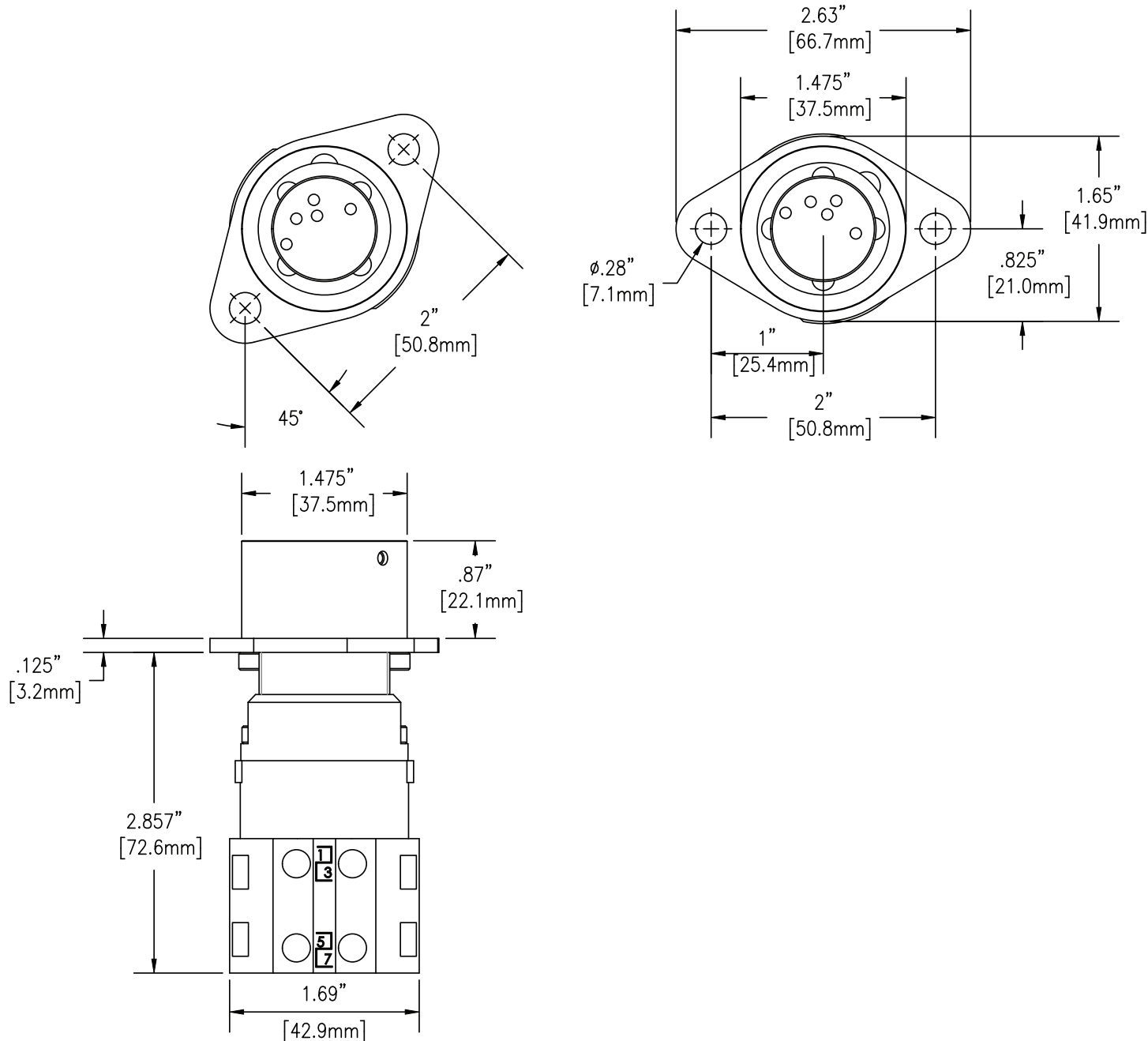


Part of the  
Sentric Group

## DRAWING

Dimensions: in inches

### HD Series Type PPS



# Type PPS Isolation Interlock



Part of the  
Sentric Group

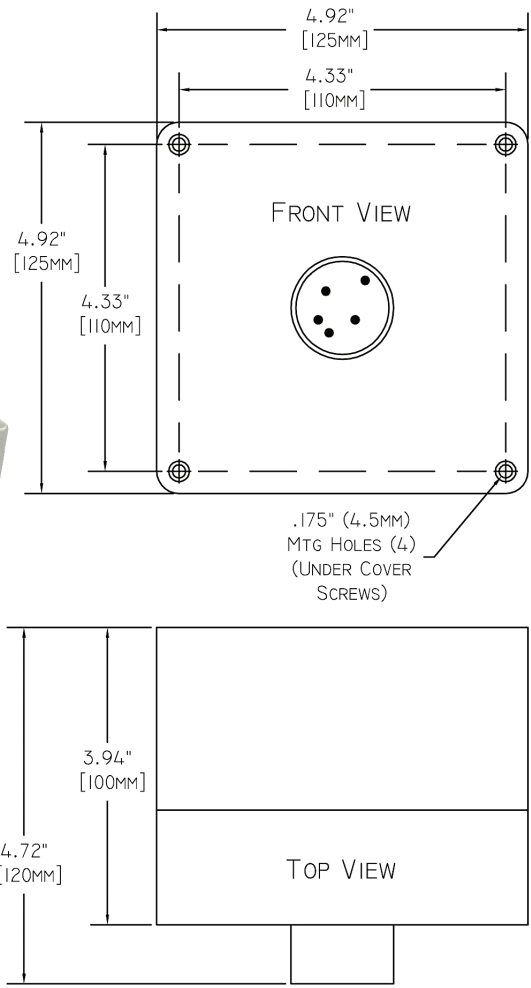
## DRAWING

Dimensions: in inches

### HD Series Type PPS



ENCLOSED PPS AVAILABLE FOR  
20 AMP ONLY



# Type PPS Isolation Interlock



Part of the  
Sentric Group

## ORDER INFORMATION

	1	2	3	4	5	6	7	8	9	10	11	12	13
Part number		P	P	S				1	0				

1	Series	K = SD Series (brass)				S = HD Series (stainless)			
5, 6, 7	Switch Rating and Contact Arrangement	Switch Ratings for both series							
		2	2	A	2 NO/2 NC - 20A Rating	2	2	C	2 NO/2 NC - 40A Rating
		4	0	A		4 NO - 20A Rating	4	0	
		2	2	B	2 NO/2 NC - 25A Rating	4	0	D	4 NO - 63A Rating
		4	0	B		4 NO - 25A Rating			
10	Stamp Key Interchange	— = No S = Yes				Stamp Key interchange only available for HD series when protective Flip Open Cover is added			
11	Protective Covers see protective covers data sheet	— = No    C = Push On    F = Flip Open				— = No    F = Flip Open with LOTO provision			
12	Mounting Bolts see mounting bolt data sheet	— = No    M = Hex    T = Tamperproof							
13	Style	— = Panel Mounted    E = Enclosed				(Only available for 20amp options)			

## CONTACT INFORMATION

### The Kirk Key Interlock Company LLC

9048 Meridian Circle NW, North Canton, OH 44720, USA

Toll Free: +1 800-438-2442 | O: +1 234-209-9301 | F: +1 330-497-4400

Quotes & Inquiries: sales@kirkkey.com | PO Submission & Orders: orders@kirkkey.com