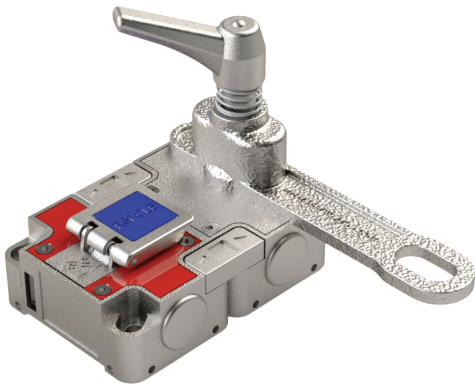


NX - Access lock



Part of the
Sentric Group



The NX access lock is a locking system designed to secure access to swing and sliding doors. It is made of stainless steel for standard industrial applications. It is modular and available with up to 4 key entries and one latch entry.

The NX access lock is available in various options: painting, emergency escape device, electrical switch...



Trapped Key
Interlocks



INDUSTRY



ENERGY




RAILWAY

USAGE

The NX Access lock should be used to provide safe access to hazardous areas.

The NX Access lock can be used with a single key for access hatches or with a minimum of two keys for access doors where the use of a lockout key is essential (to prevent accidental lockout).

 The NX Access lock is not designed to secure access to a safe, external access to a building, for doors or access gates.

INSTALLATION

 A safety lock must be fitted with appropriate fixings.

Important:

To prevent unauthorised removal, the lock must be fitted using rivets or M5 stainless steel security screws (washers, nuts and screws).

Installation must be carried out by a competent and qualified person.

MAINTENANCE

Periodic visual inspections should be carried out by the Facility Manager or Safety Manager to ensure that there is no distortion or corrosion/erosion/acid build-up and that the lock marking plate is clearly legible.

Do not lubricate the lock cylinder with oil or grease.

TECHNICAL DATA

Weight	Starting at 1,2 kg (for 1 key entry and 1 latch entry)
Material	- 304 stainless steel - Flip cap gasket: Cellular Silicon - Marking plate: Aluminium - Riveted plate (Brass rivets) or glued (Acrylic - Loctite AA330)
Product finishing	- Cover: Red polyester paint (RAL 3000)
Temperature rating	-35°C / +120°C for both lock & switch
Salt spray tolerance	240h
Watertightness	IP4X-lock IP66-switch
IK rating	IK08 lock IK08 switch
Vibrations	0.7mm @10-55HZ 1 oct/min in 3 axes
Retentive strength	250N-key 600N-latch
Lifespan	1000000 cycles
B10d	200000 cycles
DC	90%
Compliance	- CE Marking Directive 2001/95/EC - Machinery Directive 2006/42/EC - Low Voltage Directive 2014/35/EU (with a switch)
ROHS	Certificate available on our website, Resource Centre section
REACH	Certificate available on our website, Resource Centre section
Conflict Minerals Declaration	Certificate available on our website, Resource Centre section

OPTIONS

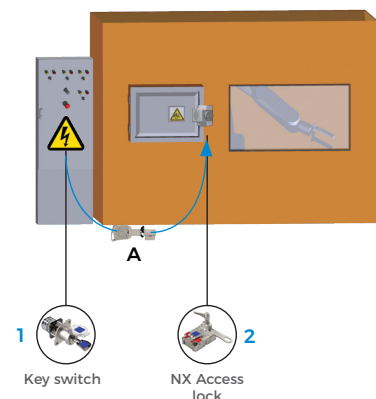
- 1 to 4 key entries
- Switch 2NC-1NO (standard) - switches status when the key is trapped
- Without flip cap
- Not painted
- Lock with padlock guard: (lockout by padlock, if several technicians are involved)
- Emergency evacuation unit (anti-panic solution)

APPLICATION

The system includes a RTK key switch to control machine control circuit and a NX access lock for entering the hazardous area. Under normal machine operation (motor powered), the power key A is trapped in the RTK and the access doors to the hazardous area are closed and locked

To access the hazardous area:

1. The operator releases the isolation key A from the RTK, thus cutting off the power to the machine.
2. The isolation key A is then trapped in the NX access lock releasing the latch allowing access to the area.
3. To put the machine back into services, the operator follows the same steps in reverse order.



NX - Access lock



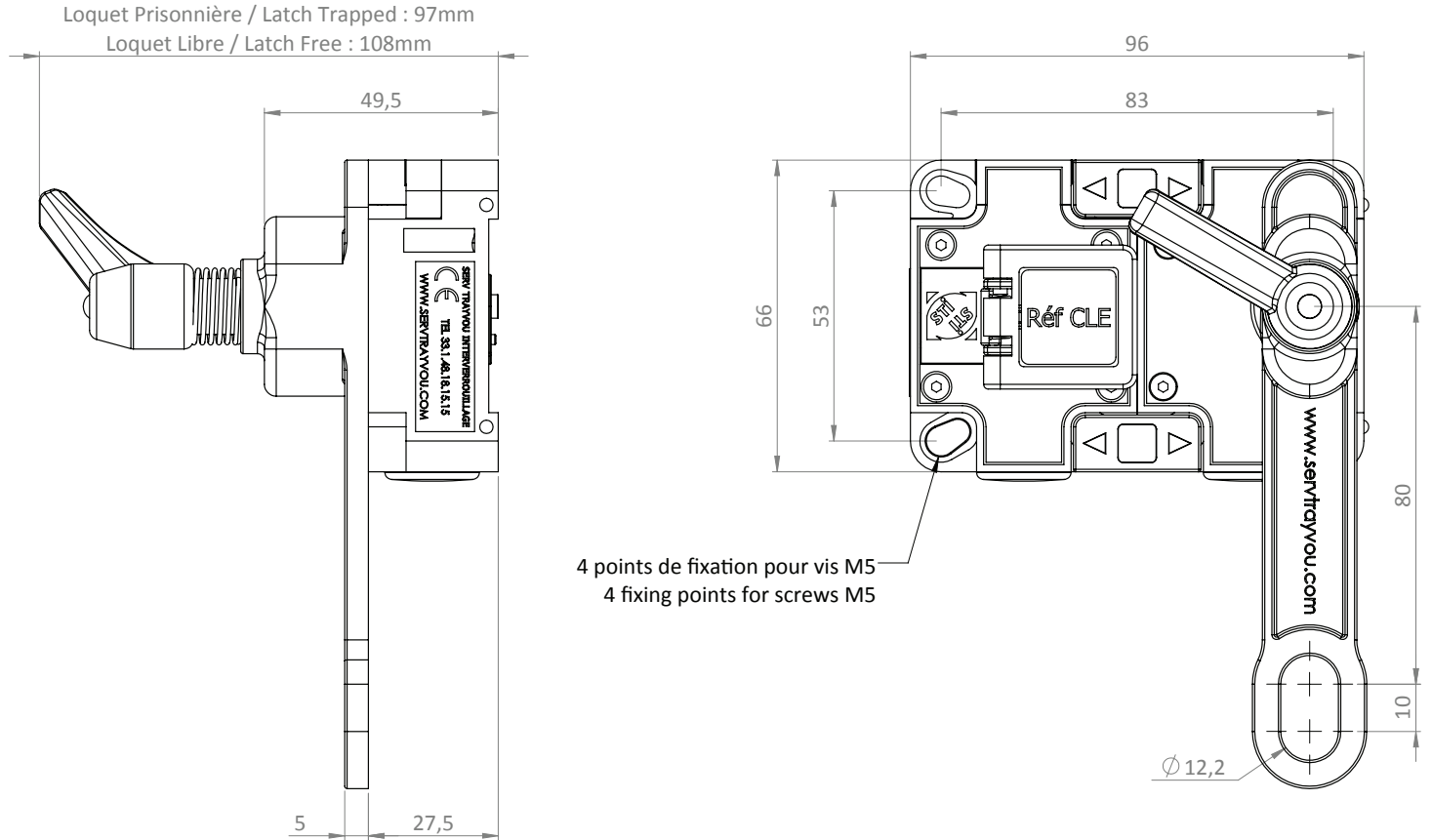
Part of the
Sentric Group

DRAWING

Dimensions: in mm

Note: For a safe mounting, use rivets or self-tapping screws.

NX access lock with one key entry



NX - Access lock



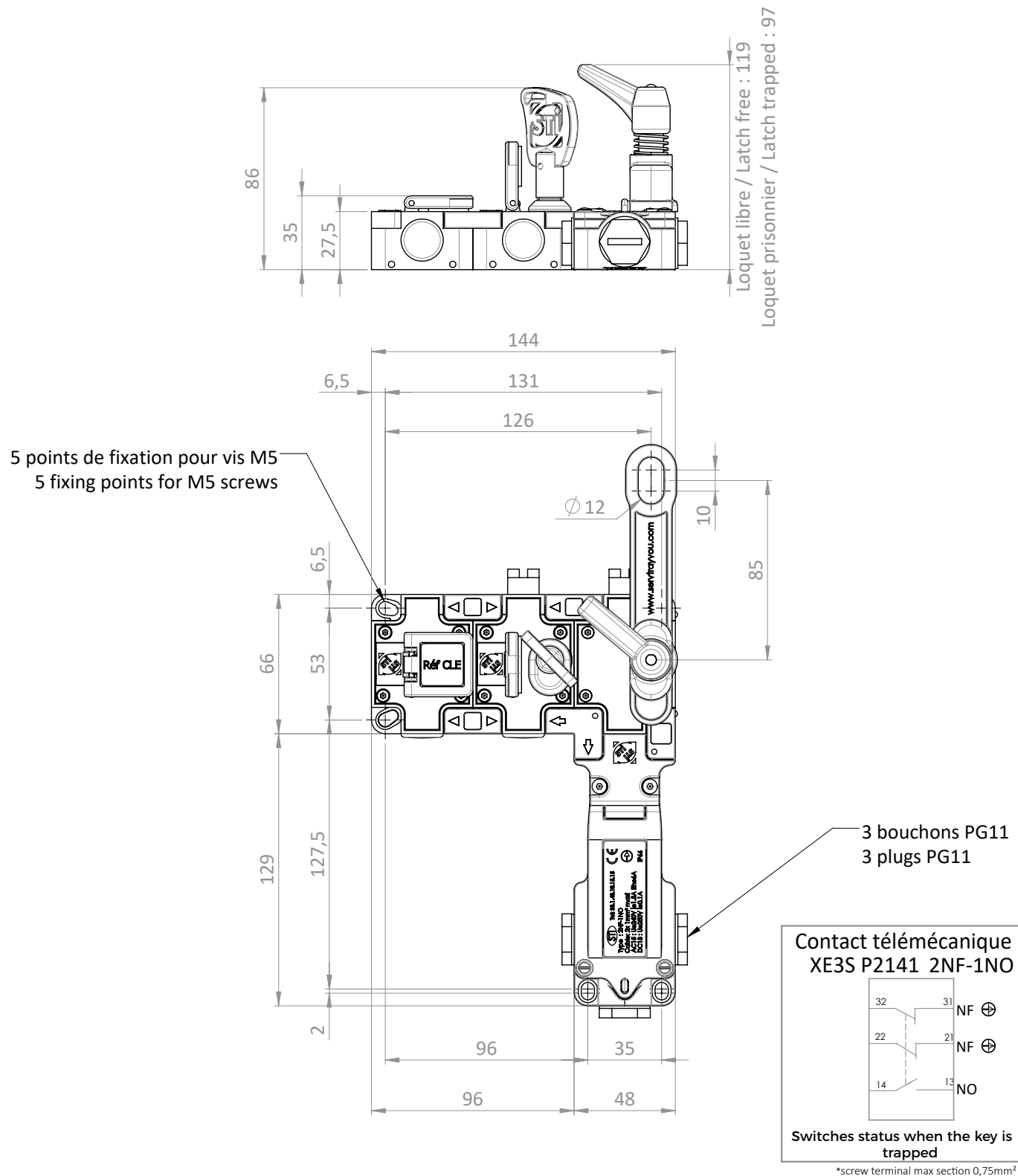
Part of the
Sentric Group

DRAWING

Dimensions: in mm

Note: For a safe mounting, use rivets or self-tapping screws.

NX access lock with two switches key entries (in front position)



NX - Access lock

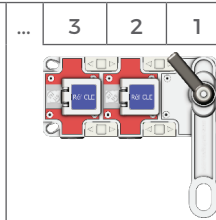


Part of the
Sentric Group

ORDER INFORMATION

	NX	N° of entries	0	Latch	Function	Switch	Position	Order no
Reference	NX							
Example	NX	4	0	L85	AK	BS	2	0

1	N° of entries	From 2 to 5 entries (including 1 latch entry)
2	Latch	L85 = Standard latch 85mm C20 = Chain latch 20cm C60 = Chain latch 60cm LTS = Standard T-latch LTC = Lockout T-latch (for exchange function) LSP = Special latch (see Order no) CSP = Key catch with special chain (see Order no)
3	Function	The function determines the key position (in or out). See FUNCTION table
4	Switch	NS = No Switch BS = Back Switch FS = Front Switch
5	Position	From 1 to 5 which shows the contact position on the device starting from the right
6	Order no	For specific applications. This number is assigned by STI for an adapted product



N° of entries	Function	Principle
2	BT	
3	BV	
3	BW	
4	BY	
4	BZ	
4	CA	
5	CC	
5	CD	
5	CE	
5	CF	

Legend	○	free key
	●	trapped key
	■	trapped latch
	□	free latch

NX - Access lock



Part of the
Sentric Group

ACCESSOIRES

- Kit support loquet (ref. 201561)

CONTACTS

Serv Trayvou

1 ter rue du Marais, 93100 MONTREUIL, France

t: +33 (0)1 48 18 15 15 | f: +33 (0)1 48 59 68 50 | e: sales@servtrayvou.com